

□ **OPL-400CF**

□ **OPL-400BNF**

Omnipro

Two - Handle Lavatory Faucet



FEATURES & BENEFITS

- This Product Contains Less Than 0.25% Weighted Average Lead Content On Wetted Surfaces
- Metal Lever Handle
- Ceramic Cartridge
- 50/50 Push Pop-Up
- Max Flow Rate 1.2 GPM (4.5L/Min) At 60 PSI (ASME A112.18.1/A112.18.1)

OPL-400CF
Chrome Finish

OPL-400BNF
Brushed Nickel Finish

Approvals:

Meets or Exceeds The Following:

- * ANSI/ASME A112.18.1/A112.18.1
- * NSF/ANSI 61 - Sec. 9
- * NSF/ANSI 372
- * IAPMO/cUPC
- * CA AB1953
- * ADA Compliant
- * EPA WaterSense
- * NSF/ANSI/CAN 61: $Q \leq 1$

TEL: 800-217-4603

Visit Our Web Site : www.omniprofaucets.com



□ **OPL-400CF**

□ **OPL-400BNF**

Omni**pro**

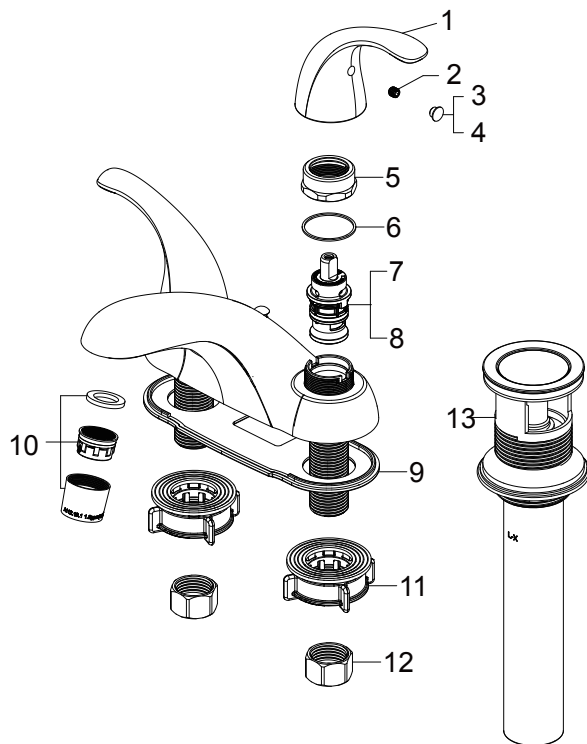
Two - Handle Lavatory Faucet

No. Name

- 1 Handle / Llave
- 2 Set screw / Tornillo de fijación
- 3 Index H / Índice H
- 4 Index C / Índice C
- 5 Bonnet / Bonete
- 6 Washer / Arandela
- 7 Cartridge H / Cartucho H
- 8 Cartridge C / Cartucho C
- 9 Gasket / Junta
- 10 Aerator / Aireado
- 11 Easy install nut / Tuerca fácil de instalar
- 12 Coupling nut / Tuerca de acoplamiento
- 13 Pop-up assembly / Ensamblaje emergente

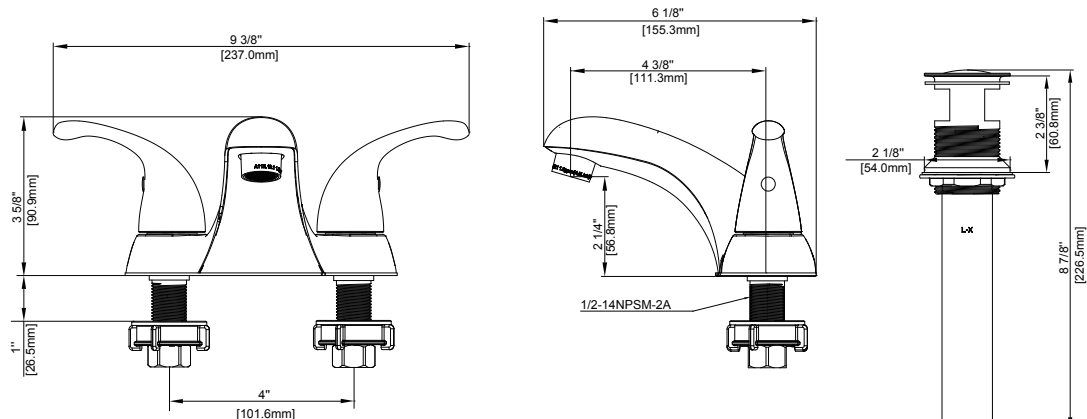
Part No.

- RP13308*
- RP50002
- RP10004
- RP10005
- RP70678
- RP64124
- RP20067
- RP20068
- RP80620
- RP30193*
- RP56095
- RP56002
- RP40317*



* Specify Finish
* Especifique el Acabado

Product Spec Sheet



TEL: 800-217-4603

Visit Our Web Site :

www.omniprofaucets.com